



DIFFUTHERM







NEW

DIPRO 617

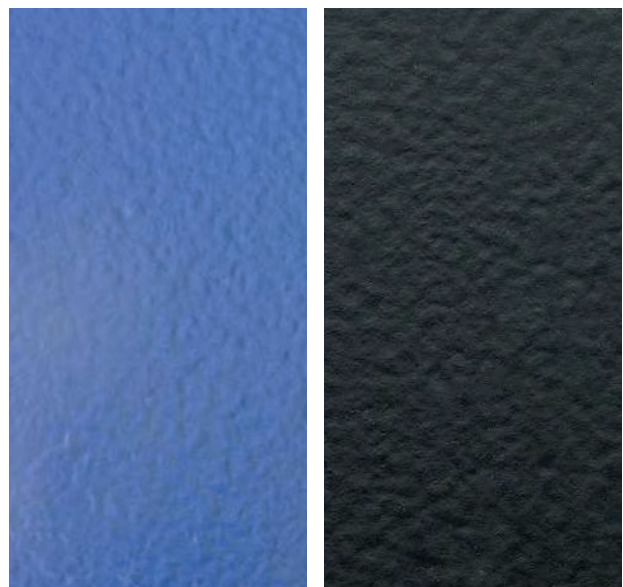
WATER BASED HIGH PERFORMANCE BITUMEN PROTECTIVE COATING

The benefits of a bitumen coating – in a low-VOC formulation

Advanced protection for demanding UBC and chassis applications. DIPRO 617 is a unique water based bitumen protective coating for automotive and aftermarket use. Strong corrosion protection in a modern low-VOC formulation.

-  Water based formulation
-  Excellent corrosion protection
-  Very good stone chipping resistance
-  Fast drying & weathering resistance
-  Superior adhesion & maximum flexibility
-  Approved for automotive applications

Wet phase | blue color → Dry phase | black color



DIPRO 617

Proven corrosion protection for UBC & chassis applications

DIPRO 617 is a high-performance water based bitumen protective coating developed for demanding automotive and aftermarket requirements. Its unique formulation combines high performance with a water based technology that stands out in the market. The result is a durable, high-performing protective coating with excellent adhesion, flexibility and corrosion resistance.

Corrosion protection of DIPRO 617 has been extensively evaluated according to leading standards:

- 5% conc. neutral salt spray testing at 35 °C, ISO 9227
- Cyclic corrosion testing-2, ISO 60068-2-52
- Constant high humidity at 40 °C, ISO 6270-2

Direct to metal protection: Many 1-K water based UBCs on the market fail in continuous salt spray testing on steel. DIPRO 617 delivers direct to metal protection.

Additional product information

- No symbols / pictograms on product label
- Short-term frost sensitive up to -10 °C
- Shelf life up to 18 months



APPLICATIONS

- Underbody protection for passenger vehicles
- Chassis protection for commercial vehicles
- Automotive OEM applications
- Aftermarket underbody coating
- Stone chip protection for exposed vehicle areas
- Corrosion protection for vehicle components

PACKAGING UNITS

- 5 L, 10 L, 20 L and 60 L buckets
- 200 L drum
- 1,000 L IBC